

This presentation is a guide for the use of macro synthetic fibers as an alternate non-structural temperature/shrinkage reinforcement for the concrete used in various metal deck assemblies.

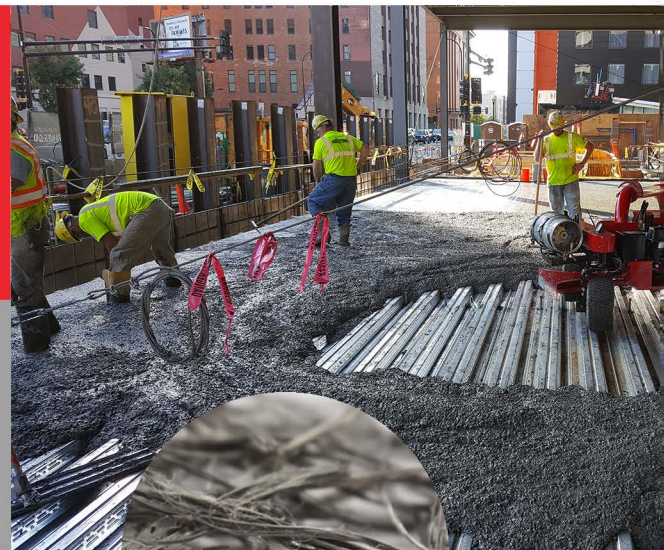
PROGRAM: "FRC - Slab-on-Metal-Deck" - Part 4

CREDIT: 1 Continuing Education Unit

LENGTH: 60 minutes

COST: No charge for qualified groups

This presentation is brought to you by FORTA Corporation.
Call Us to Schedule Your Seminar Today!
1-800-254-0306



In this seminar, you will:

- Understand the basic types and performance levels of synthetic fibers
- Review the general causes of shrinkage and curling in slab-on-metal-deck applications, along with typical jointing practices
- Review various codes and specifications for metal deck assemblies with regards to fiber reinforcement, including SDI, UL, ASTM, and ACI
- Understand related macro fiber nuances, including mixing, slump, pumping, and finishing
- Summary of fiber-related project checklists and available documents for project submittals

SO.1.04.07.18